

# Application Note Series

## Using AccuTrac™ to Update °C Port Firmware

**Product Platforms:** Multipoint Instrumentation

**Purpose:** Provide instructions to use AccuTrac™ software to update °C Port Instrument firmware.

### SUMMARY

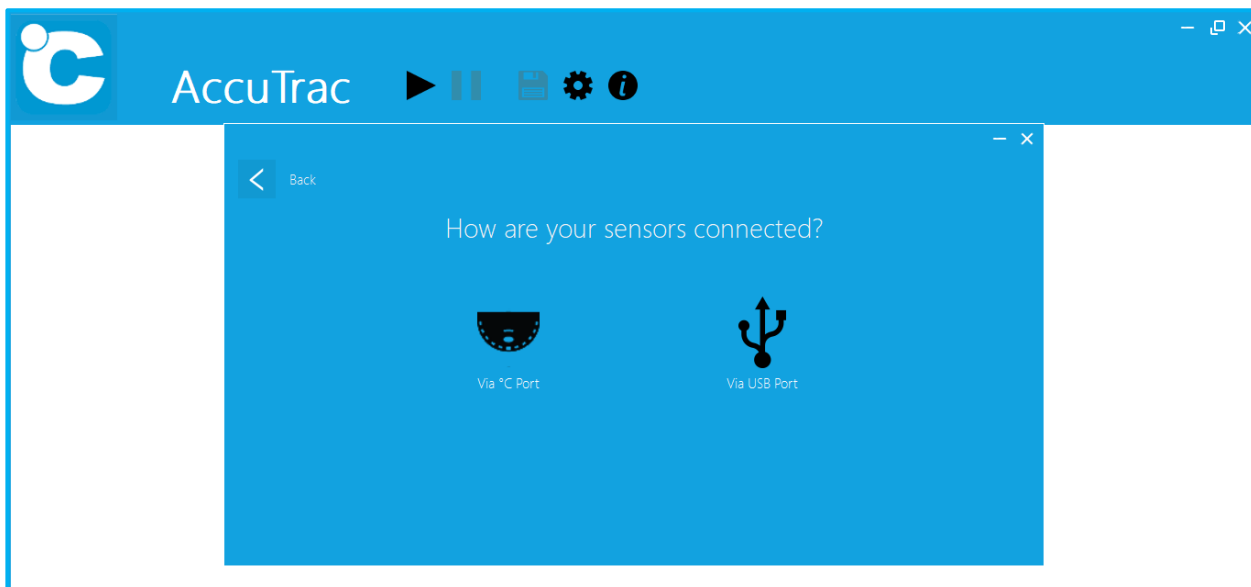
DegreeC's AccuTrac™ software for airflow testing and measurement allows you to update °C Port instrument firmware over the network. If a connected °C Port's firmware is not up to date, an update notification will pop up from the Finding °C Ports screen. AccuTrac™ also shows the firmware version of connected °C Ports in hover text for the user's convenience.

### INSTRUCTIONS

Steps to upgrade °C Port Instrument firmware using AccuTrac™ are outlined below. AccuTrac™ version 1.6.0.1 or higher is required. AccuTrac™ may be downloaded from our [website](#).

#### Update Notification

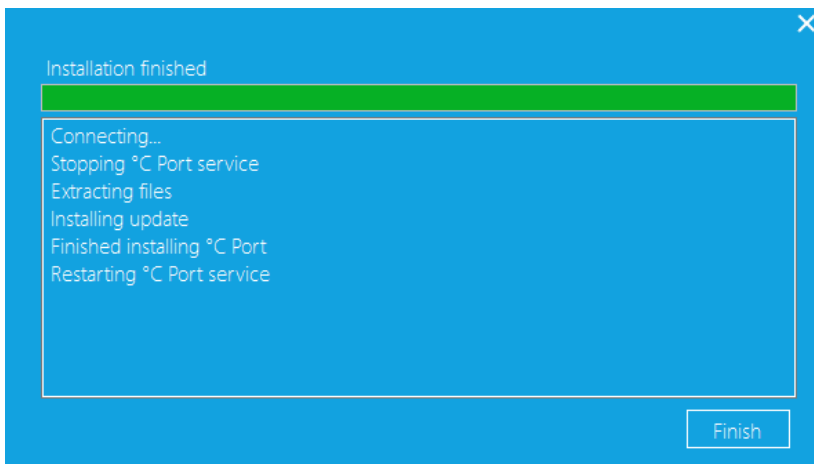
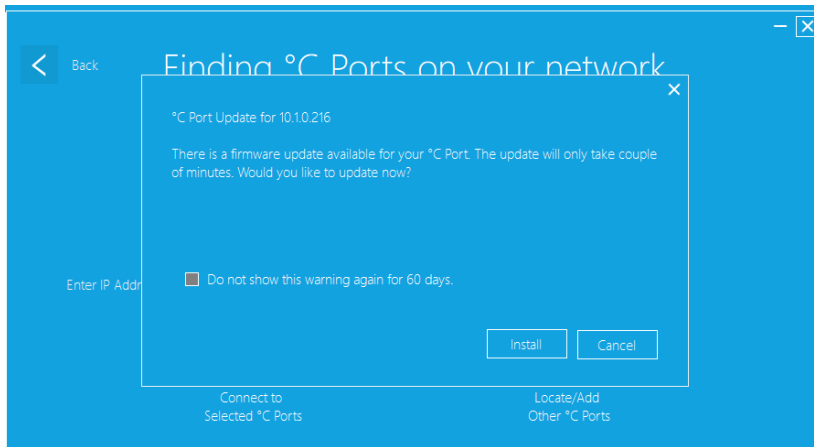
Launch AccuTrac™, and select *Via °C Port* as you normally do to begin your experiment.



# Application Note Series

## Using AccuTrac™ to Update °C Port Firmware

AccuTrac™ searches for °C Ports on your network and notifies you if there is a firmware update available for your °C Port. Select *Install* to proceed with the update and then select *Finish*.



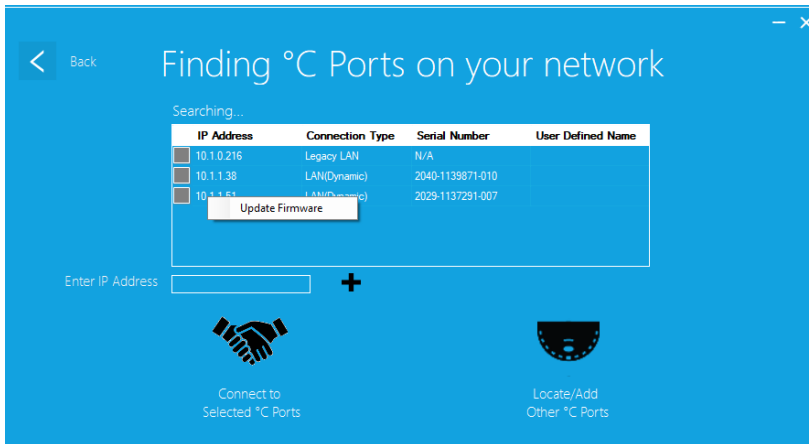
AccuTrac™ will step you through the same sequence to update firmware for any other °C Ports on your network.

### Initiate an Update Manually

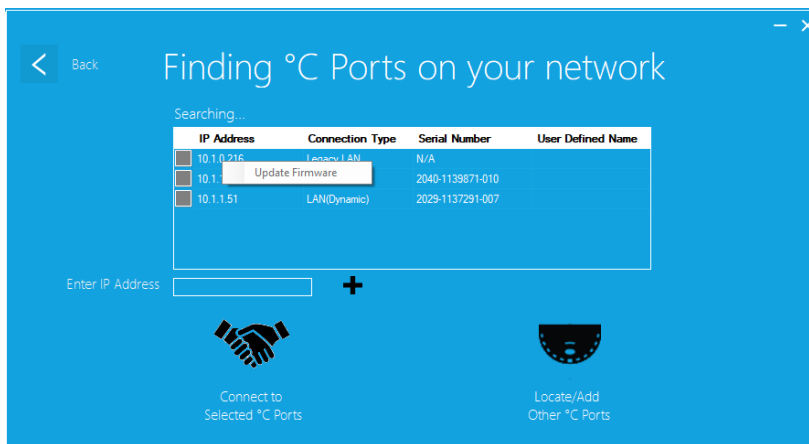
Alternatively, you may **right click** on any °C Port listed in the Finding °C Ports screen (these are °C Ports found on your network) and then select *Update Firmware* to initiate a firmware update manually. Navigate to the list of °C Ports on your network by following this path: **Main>Settings>°C Port & Sensor Connections**.

# Application Note Series

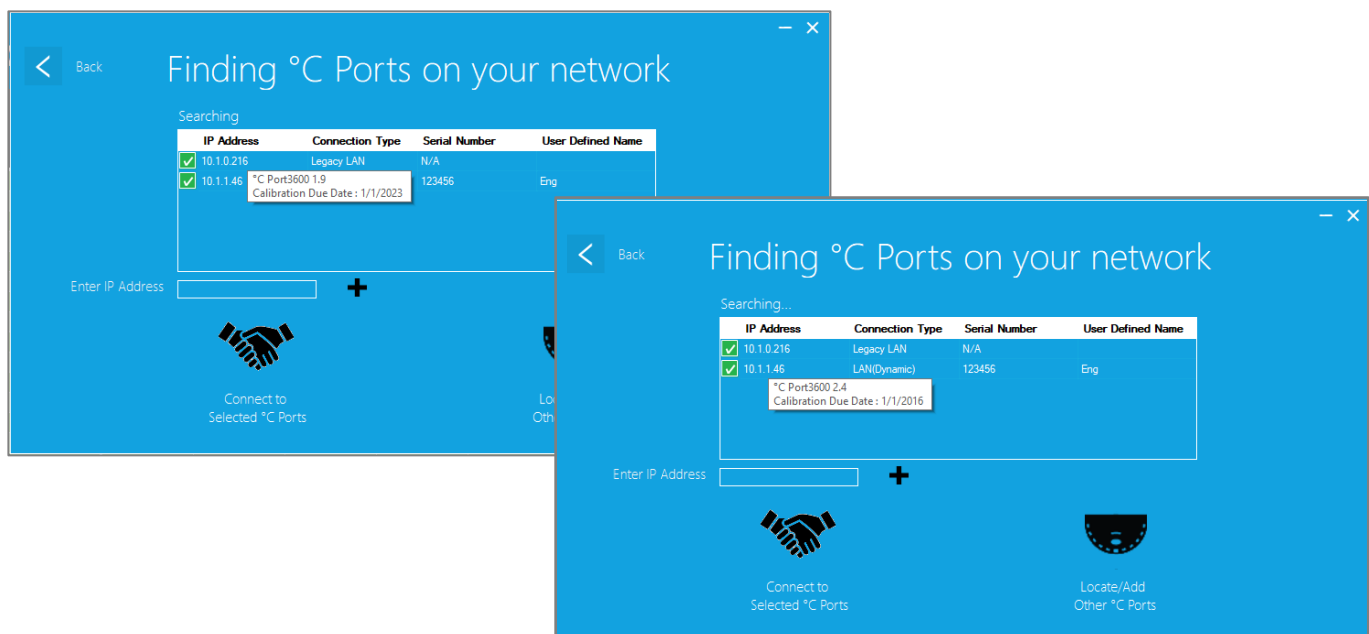
## Using AccuTrac™ to Update °C Port Firmware



If there is no update available, *Update Firmware* will be grayed out.



Hover text shows the firmware version for each C Port found on your network.



# Application Note Series

## Using AccuTrac™ to Update °C Port Firmware

Note: For °C Ports with an LCD display, the firmware version shows in the lower right-hand corner of the display during °C Port startup.

### CONTACT

---

To find out more about Degree Controls' sensor products and solutions, contact us at 1-877-degreeC, or visit our website at [www.degreeC.com](http://www.degreeC.com). Email sales inquiries to [sales@degrec.com](mailto:sales@degrec.com).

Degree Controls, Inc.  
18 Meadowbrook Drive  
Milford, New Hampshire, 03055  
USA