

Application Note Series

°C Port Update Installer

Product Platforms: Multipoint Instrumentation

Purpose: Provide instructions for the installation and operation of the °C Port Update Installer program to update °C Port Instrument firmware.

SUMMARY

The °C Port Update Installer is a standalone program that runs on a PC and updates °C Port Instrument firmware over Ethernet. The [update installer](#), PN 65110SW003-**A00**, can be downloaded from our website.

Updating Wi-Fi capable °C Ports to firmware version 2.4 and legacy °C Ports to firmware version 1.9 enables communication with new UAS sensors having advanced processing technology. Refer to Application Note ANS-SD18 *New UAS Technology* for details.

Type	Description	Part Number	°C Port Update Installer 65110SW003-A00
New °C Port			
	°C Port3600 with Added Wi-Fi Capability	SH65110	Updates °C Port revisions ≤ R04 to firmware version 2.4
	°C Port3600 Ethernet Only Communication	SH65111	Updates °C Port revisions ≤ R01 to firmware version 2.4
	°C Port1200 with Added Wi-Fi Capability	SH65210	Updates °C Port revisions ≤ R01 to firmware version 2.4
	°C Port1200 Ethernet Only Communication	SH65211	Updates °C Port revisions ≤ R01 to firmware version 2.4
Legacy °C Port			
	°C Port3600	SH65100	Updates °C Port revisions ≤ R15 to firmware version 1.9
	°C Port1200	SH65200	Updates °C Port revisions ≤ R03 to firmware version 1.9

INSTRUCTIONS

Steps to upgrade °C Port Instrument firmware:

Set Up the °C Port

1. Make a wired Ethernet connection to the °C Port: Connect the °C Port directly to a PC with static IP

Application Note Series

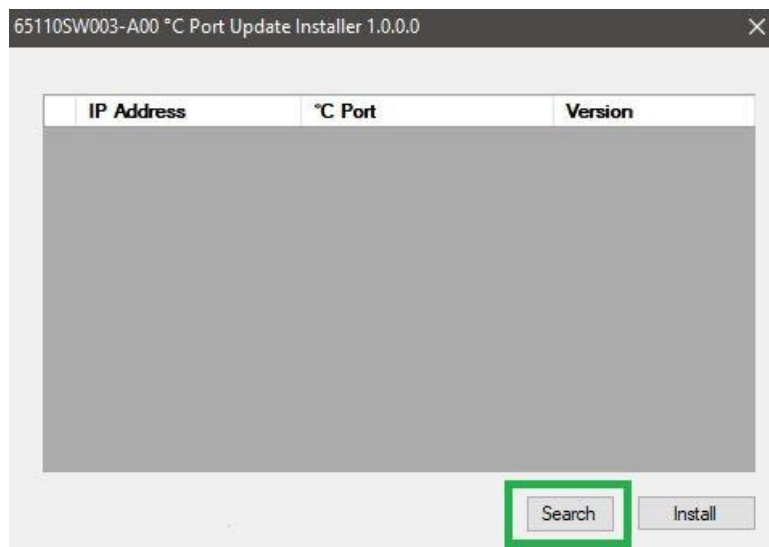
°C Port Update Installer

addressing, or connect the °C Port to the network (LAN) with dynamic IP addressing. Refer to the [product manual](#) on our website, for more detailed information.

- a. Ensure that the °C Port and PC are connected to the same network so that °C Port can be discovered by network search.
2. Switch power on, and note the following:
 - a. The white LED will light to indicate powered.
 - b. The green LED will stop blinking when a network connection is established.

Install the Program and Initiate a Firmware Update

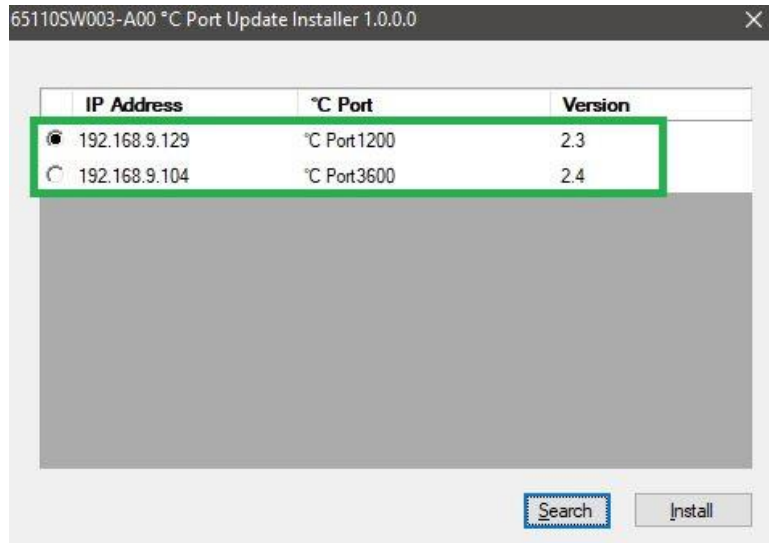
1. Copy the °C Port Update Installer software to your PC.
2. Launch the program, and then select *Search*.



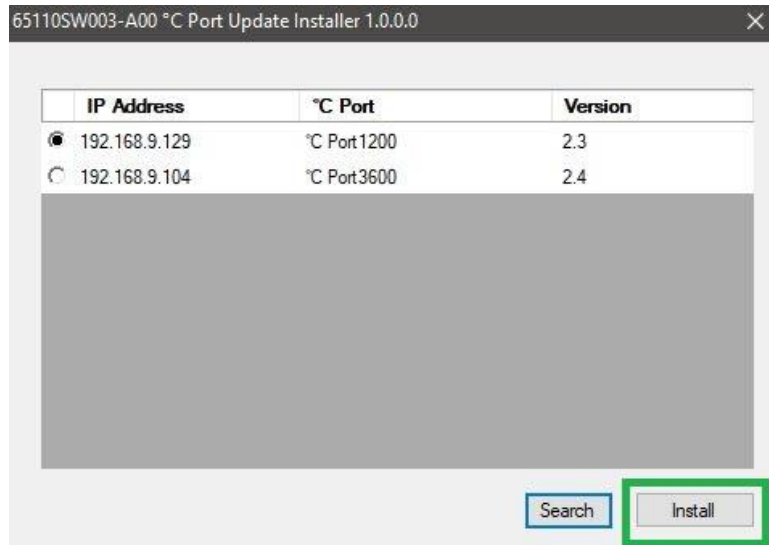
3. After a quick search, a list of connected °C Ports will appear. If you need to update a °C Port which does not appear in the list, check the following:
 - a. Verify the network connection to the °C Port.
 - b. Verify that the °C port and the PC are connected to the same network.
 - c. If you have a virtual adapter or Bluetooth network connection enabled, disable it. Open **Network & Internet Settings > Ethernet > Change Adapter Options**. Right click on the virtual adapter or Bluetooth network connection to disable it.
4. Verify the firmware version, and select the °C Port you want to upgrade.

Application Note Series

°C Port Update Installer

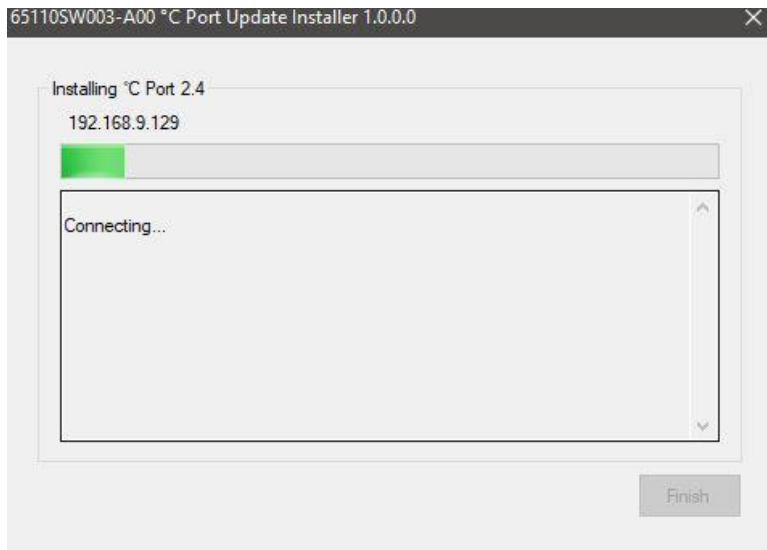


5. Select *Install* to begin the firmware update on the selected °C Port.
 - a. Note: The network connection to the °C Port must not be interrupted during the update process. If the update fails due to a power or network disruption, the °C Port will still be at the older firmware revision when it is restarted.

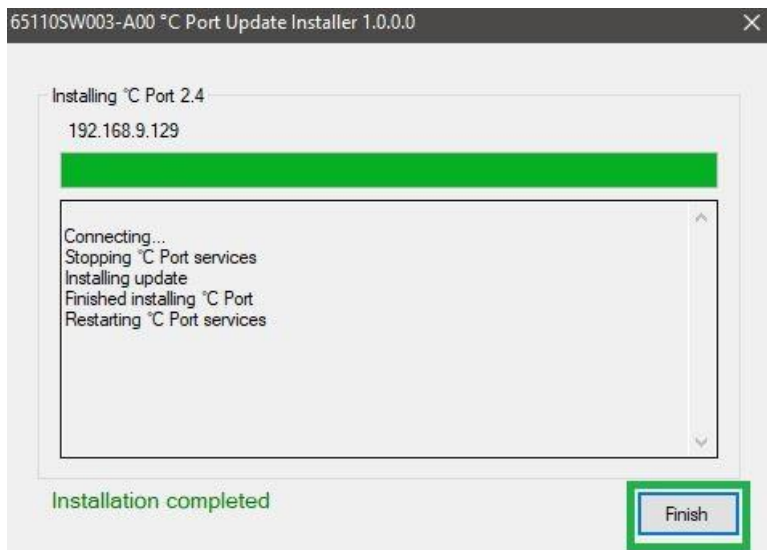


Application Note Series

°C Port Update Installer



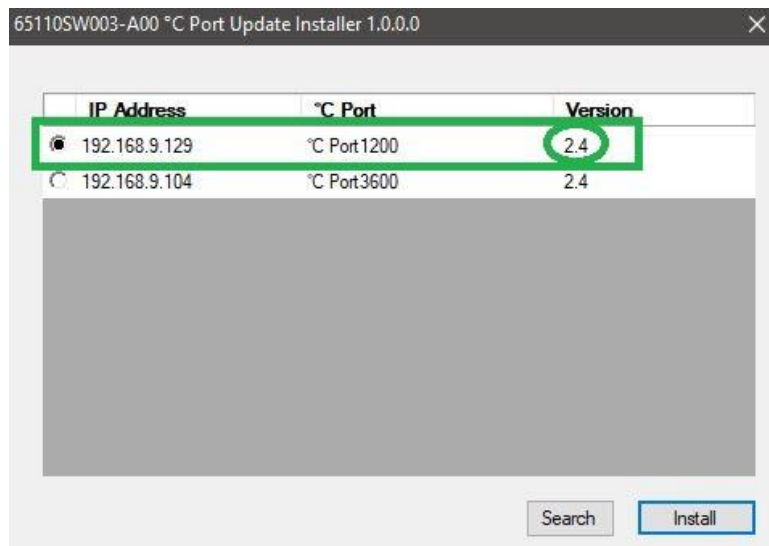
6. Once the "Installation completed" message appears select *Finish* to return to the network search screen.



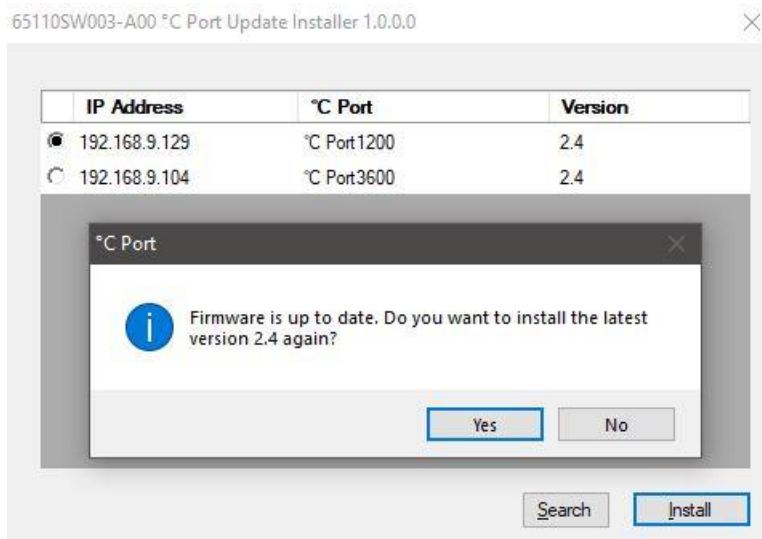
7. Review the firmware version, and close the application.

Application Note Series

°C Port Update Installer



8. The same version of firmware can be reinstalled at any time. This is only recommended if your °C Port is not working properly.
 - a. On the search page, select the °C port for which the firmware should be reinstalled.
 - b. Select "Yes" to reinstall the firmware once again.



CONTACT

To find out more about Degree Controls' sensor products and solutions, contact us at 1-877-degreeC, or visit our website at www.degreeC.com. Email sales inquiries to sales@degrec.com.

Degree Controls, Inc.
 18 Meadowbrook Drive
 Milford, New Hampshire, 03055
 USA